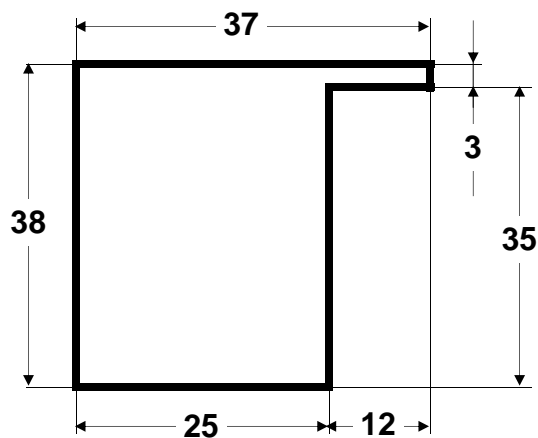
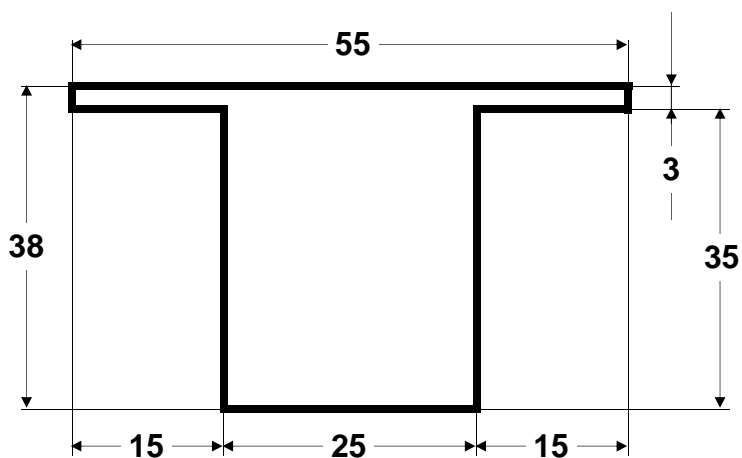


## TUBOLARI PER SERRAMENTI

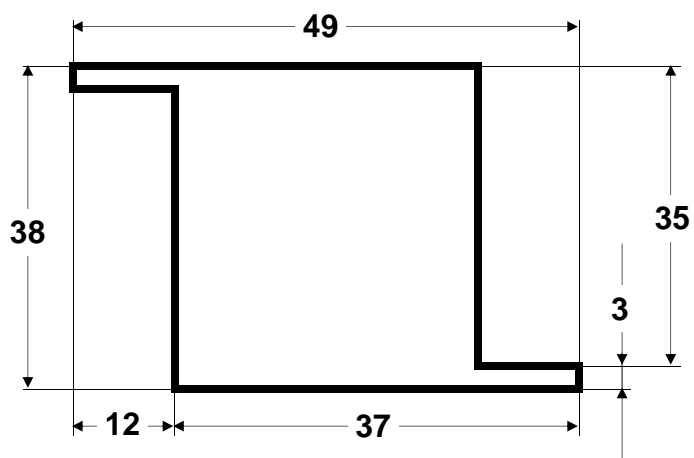
Spessore 1,5 mm



**1A/BL1**  
1,72 Kg/m



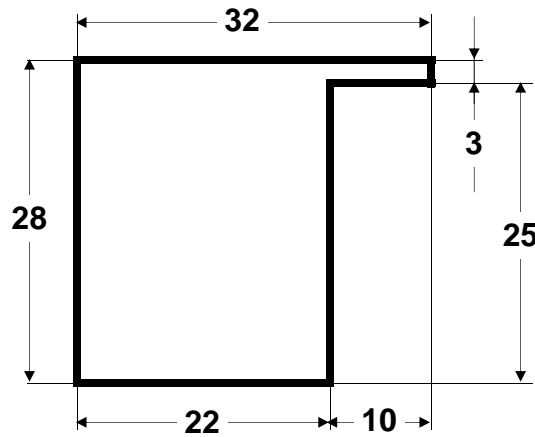
**1B/BT1**  
2,10 Kg/m



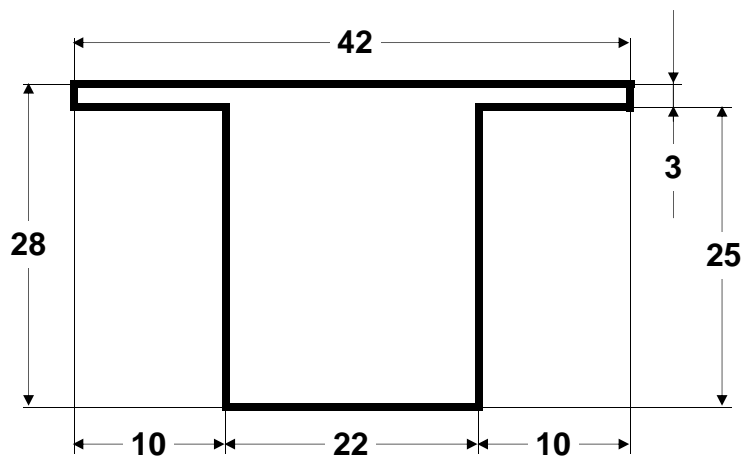
**1C/BZ1**  
1,99 Kg/m

## TUBOLARI PER SERRAMENTI

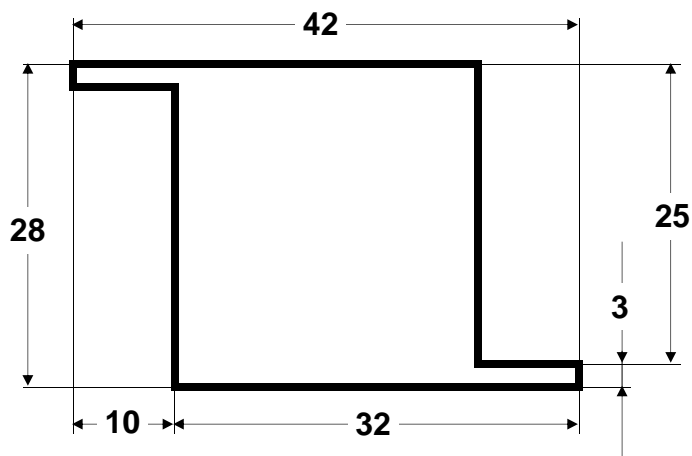
Spessore 1,5 mm



**11A/BL11**  
1,34 Kg/m



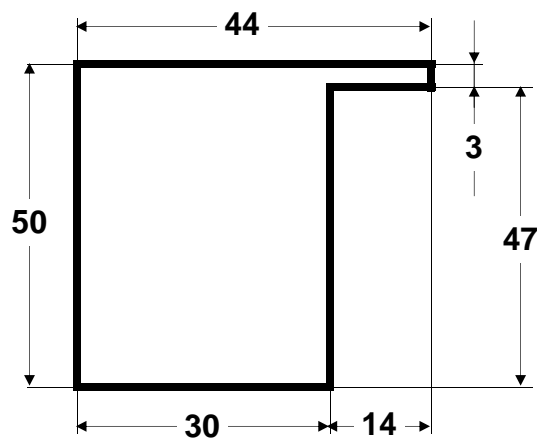
**11B/BT11**  
1,57 Kg/m



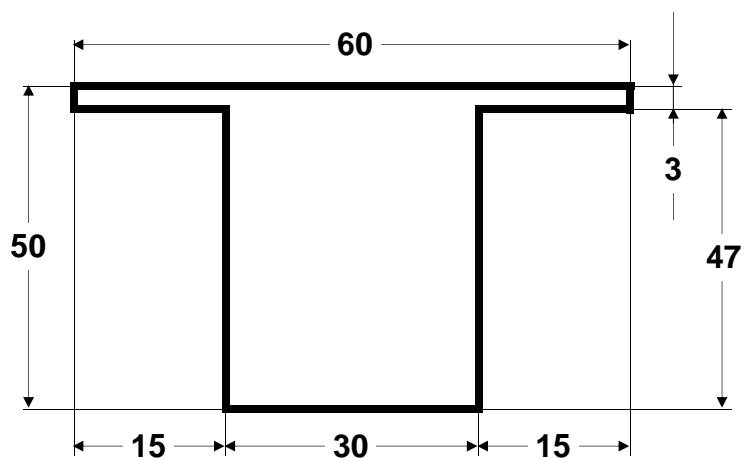
**11C/BZ11**  
1,57 Kg/m

## TUBOLARI PER SERRAMENTI

Spessore 1,5 mm



**3L/SF1B**  
2,20 Kg/m



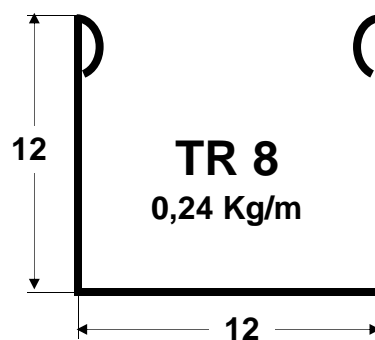
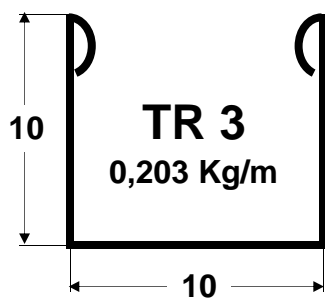
**3T/SF2B**  
2,52 Kg/m

# Fratelli Pelandi

---

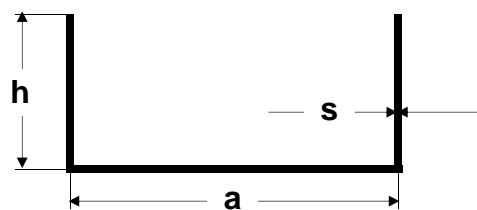
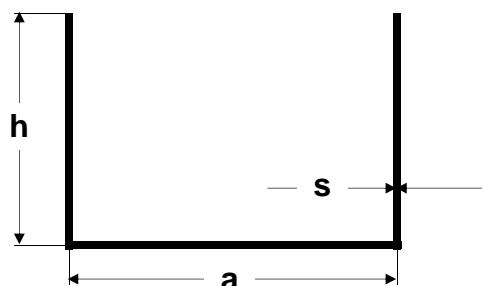
**FERMAVETRO ZINCATO A SCATTO** Spessore 0,7 mm

---



# Fratelli Pelandi

## U STAMPATO



Dimensioni in mm		Spessore in mm				Dimensioni in mm		Spessore in mm			
a	h	1,5	2	3	4	a	h	1,5	2	3	4
		Peso Kg/m						Peso Kg/m			
10	10	0,29				15	10	0,35			
12	12	0,37				15	20	0,59	0,77		
15	15	0,47	0,60			20	10	0,41	0,54		
20	20	0,65	0,85			25	12	0,52	0,68		
22	22	0,72	0,94			25	30	0,95	1,24	1,76	
25	25	0,83	1,07	1,53		25	40	1,18	1,55	2,24	
26	26	0,85	1,10	1,60		30	10	0,52			
28	28	0,94	1,23	1,77		30	15	0,64	0,85		
30	30	1,00	1,31	1,89		30	20	0,77	1,00	1,43	
35	35	1,20	1,56			30	40	1,00	1,31	1,89	
40	40		1,79	2,61	3,35	40	20	0,89	1,16	1,67	
45	45		2,20	2,96	3,82	40	30	1,12	1,47	2,14	
50	50		2,26	3,32	4,29	50	20	1,00	1,33	1,96	
60	60			3,82	4,90	50	25		1,47	2,14	
80	80			5,37	7,03	50	30		1,64	2,43	3,18
100	100			6,78	8,92	50	40		1,94	2,85	3,70
						60	20	1,20	1,47	2,14	
						60	30		1,87	2,61	3,39
						60	40		2,10	3,08	4,01
						60	50		2,41	3,58	4,73
						80	40		2,41	3,58	4,73
						80	50		2,73	4,02	5,27
						80	60		3,04	4,50	5,90
						100	30		2,41	3,58	4,73
						100	40		2,73	4,02	5,27
						100	50		3,04	4,50	5,90
						100	60		3,36	4,96	6,53
						120	50			4,96	6,53
						120	60			5,44	7,15

DISPONIBILE A MAGAZZINO